

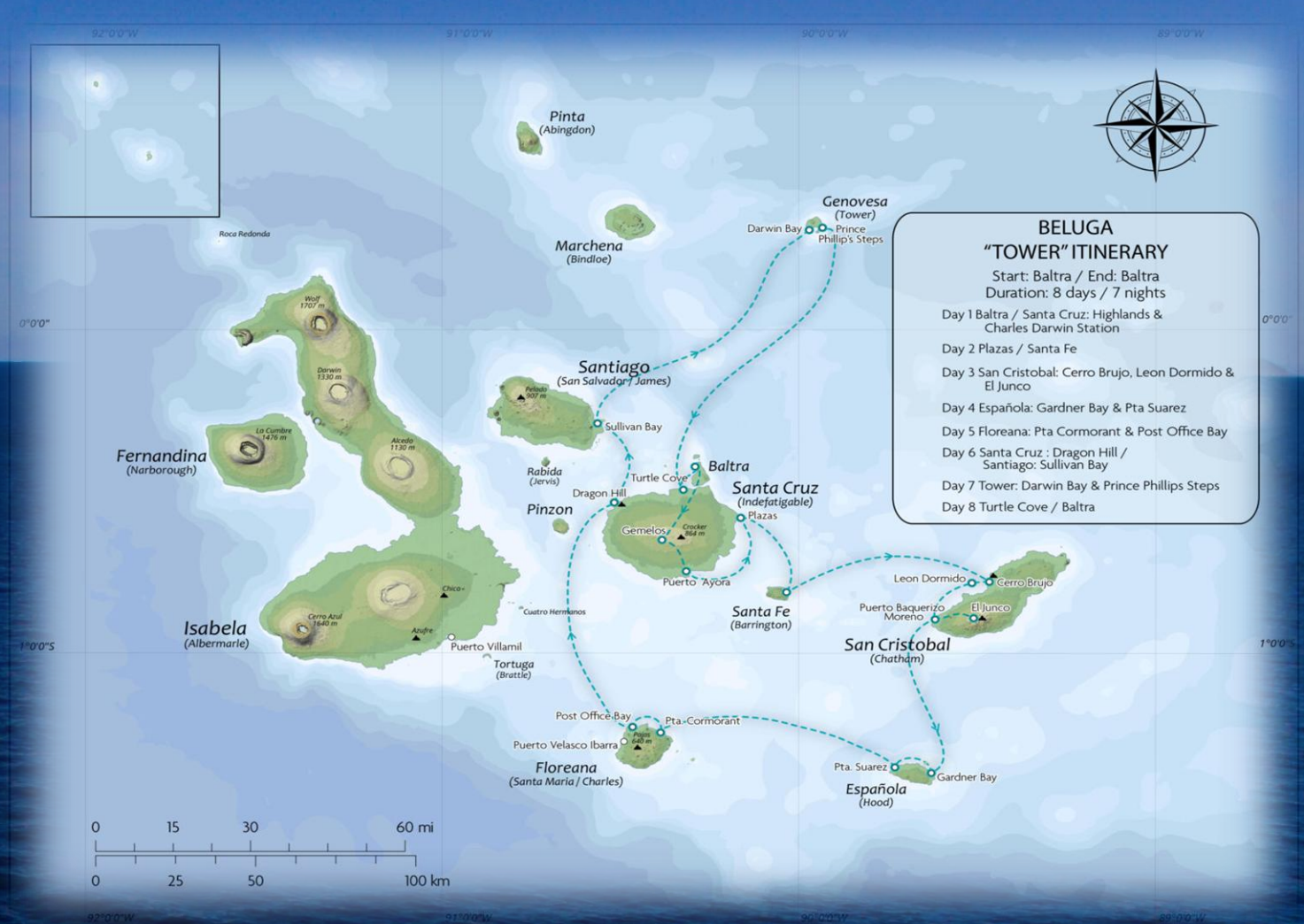


Explore Galapagos

IN THE FOOTSTEPS OF DARWIN



MAY 2026



BELUGA
"TOWER" ITINERARY
Start: Baltra / End: Baltra
Duration: 8 days / 7 nights

- Day 1 Baltra / Santa Cruz: Highlands & Charles Darwin Station
- Day 2 Plazas / Santa Fe
- Day 3 San Cristobal: Cerro Brujo, Leon Dormido & El Junco
- Day 4 Española: Gardner Bay & Pta Suarez
- Day 5 Floreana: Pta Cormorant & Post Office Bay
- Day 6 Santa Cruz: Dragon Hill / Santiago: Sullivan Bay
- Day 7 Tower: Darwin Bay & Prince Phillip's Steps
- Day 8 Turtle Cove / Baltra



DAY 01: QUITO 12th May 2026

Coming off your flight at Mariscal Sucre Quinto International Airport, stay for one night at Hotel Garden San Jose to begin your journey the following day.

DAY 02: SANTA CRUZ ISLAND 13th May 2026

Departure from Quito to Baltra (approx. 2 and half hour flight).

HIGHLANDS

The highlands of Santa Cruz are a deep green, contrasting beautifully with many of the dry, lower islands. Lunch on Santa Cruz before boarding motorized dinghies taking us out to the Beluga anchored offshore.



DAY 03: SOUTH PLAZA ISLAND/
SANTA FE ISLAND. 14th May 2026

South Plaza Island: Plazas consists of two very small islands that were uplifted from the sea, separated by a channel. Only South Plaza have a visitor site. The highlights include tall Opuntia Cacti, Land and Marine Iguanas, rocky cliffs that overlook the open ocean, which is also a nesting site for Red-billed Tropic Birds and Gulls, and a Sea Lion bachelor colony.

Santa Fe Island: Santa Fe is a smaller island of 24 km². The visitor site of Santa Fe is located on the northeast end of the island. Highlights include Santa Fe Land Iguanas, Pelican nesting site, Sea Lion colony, endemic Mockingbirds, and Palo Santo trees.



DAY 04: SAN CRISTOBAL ISLAND.

15th May 2026

This is one of the oldest of the Archipelago and the furthest Eastern island.

Witch Hill (Cerro Brujo) is a volcanic cone that looks over a beautiful, white, sandy beach which has plenty of Sea Lions, Pelicans, Blue-footed Boobies, Waders and Marine Iguanas.

Galapaguera and El Junco: The lagoon is the only freshwater reservoir in the Galapagos and has breathtaking views from its altitude of 700m in the highlands of San Cristóbal.

Rainwater has collected in the caldera for hundreds of years and formed this lagoon. Galapaguera is a good area to see Tortoises in their natural environment.



DAY 05: ESPANOLA (HOOD) ISLAND.

16th May 2026

Gardner Bay: Located on the northeast of the island, the site has a long and beautiful white sand beach inhabited by Sea Lion colonies.

Islote Gardner and Islote Osborn: These islets are snorkeling sites where visitors will see an abundance of Tropical Fish, Reef Sharks, and Turtles.

Punta Suarez: The wildlife at Punta Suarez is plentiful and varied. Along the cliff, visitors can enjoy the blowhole where seawater is forced about 20m into the air.

The highlights are the Galapagos Hawks, Blue-footed Boobies, Nazca Boobies, Española Lava Lizards, as well as Waved Albatross (April-Dec) that are only found on Espanola island.

DAY 06: FLOREANA ISLAND

17th May 2026

Punta Cormorant: Punta Cormorant has two contrasting beaches and a large inland lagoon where Pink Flamingos can be seen.

Devil's Crown: This is a snorkeling site located just off Punta Cormorant. The site is a completely submerged volcano that has eroded to create the appearance of a jagged crown.

Post Office Bay: This is one of the few sites visited for its human history. Visit the wooden mail barrel where letters are dropped off and picked up, and tour the remains of the Norwegian fishing village.



DAY 07 SANTA CRUZ ISLAND / JAMES ISLAND 18th May 2026

Santa Cruz Island

Dragon Hill: Cerro Dragon has a hyper-salinic small lagoon behind the beach, often frequented by Flamingos

James Island is located between Isabela and Santa Cruz Islands. This Island offers a wide variety of Seabirds, Marine Iguanas and Fur Seals.

Sullivan Bay: This site is of great geological interest. Highlights: 100 hundred year old lava flow field, pahoehoe formations, and lava bubbles.



DAY 08: TOWER (GENOVESA) ISLAND 19th May 2026

Tower is an eroded flat volcanic island, with a natural harbor, which is actually the submerged caldera of this volcanic island.

Darwin Bay: The steep cliffs of this area dominate the island. This area is home to thousands of Frigate Birds, Red-footed Boobies, Noddy Terns, Lava Gulls, Tropicbirds, Doves, Storm Petrels and Darwin's Finches.

El Barranco: There is a good possibility of seeing the unique "Short Eared Owl" at this site. During the dinghy rides along the cliffs Fur Seals and several species of Seabirds can be spotted.



DAY 09: SANTA CRUZ ISLAND 20th May 2026

Santa Cruz Island.

Caleta Tortuga (Turtle Cove):

Turtle Cove is a red mangrove lagoon on Santa Cruz and a perfect example of how mangroves alter the marine environment to create a rich and unique habitat.

Disembark the Beluga, one night stay at the Enchanted Galapagos Lodge (bed and breakfast), with access to shopping and the Charles Darwin Station.

DAY 10: QUITO 21st May 2026

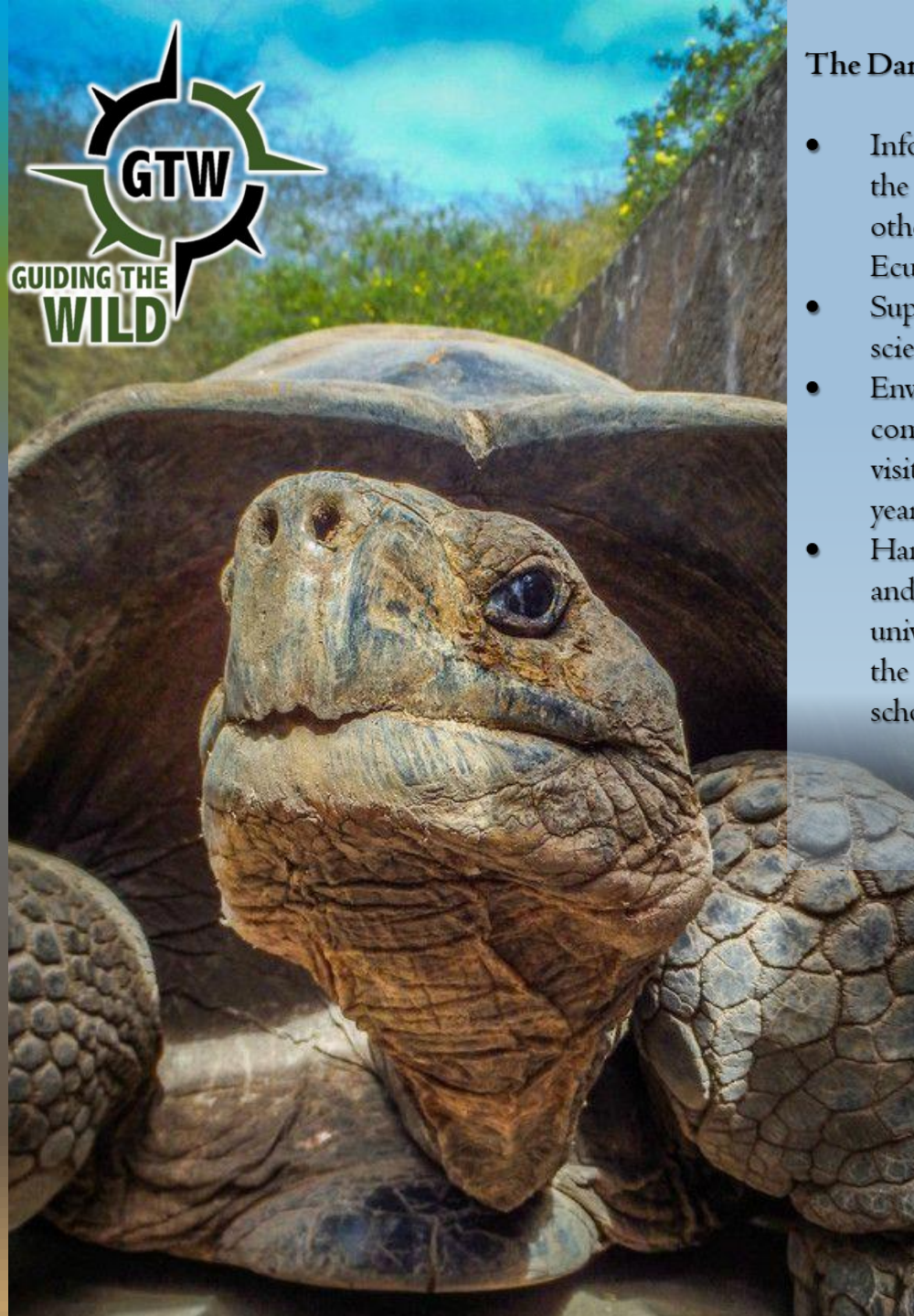
Baltra

Return flight to Quito to stay at the Hotel Garden San Jose,

Before your final return flights, the following day.

CHARLES DARWIN STATION

The Charles Darwin Research Station is in the town of Puerto Ayora on Santa Cruz Island. Here you'll experience some of the conservation and research efforts focusing on the Galapagos Islands. Tour the Van Straelen Exhibit Hall. This may be your only opportunity to see the giant Galapagos tortoises. The Charles Darwin Research Station conducts and facilitates research on the Galapagos Islands and the Galapagos Marine Resources Reserve of Ecuador. The station is a part of the Charles Darwin Foundation, an international non-profit organization dedicated to scientific research on the Galapagos Islands since 1959.



The Darwin Station provides:

- Information and technical assistance for the Galapagos National Park Service and other branches of the government of Ecuador.
- Support for resident and visiting scientists who work in Galapagos.
- Environmental education for island communities and schools and for the visitors that come to Galapagos each year.
- Hands-on training in science, education, and conservation for Ecuadorian university students who participate in the Darwin Station's volunteer and scholarship programs.



RATES

US\$ 7995.00 per person sharing

Inclusions:

All accommodation

local flights, all meals (except lunches and dinners at hotels in Quito and Santa Cruz), transport, fuel and tolls, bed levies, professional guide

Pierre Duval,

excursions, conservation fees.

Exclusions:

International flights and airport taxes, drinks and hotel extras, items of a personal nature, travel insurance and gratuities.



WHAT TO PACK

Comfortable neutral clothing, avoiding white and bright colours. Expect hot days and slightly cooler mornings/evenings.

A mixture of light weight breathable clothing (including swimwear) and a warm sweater along with rain jacket for possible inclement weather.

UV is intense in Galapagos...long sleeve T shirts and/or snorkelling vests are ideal when walking, swimming or snorkelling. Snorkelling gear is available on the Beluga...you are however welcome to bring your own.

Other essentials include comfortable, durable walking shoes, flipflops or slip on shoes for aboard the boat, hat and sunscreen, camera and binoculars, toiletries, insect repellent, hand sanitizer, etc.

Important: don't forget to bring any prescription medication along with a broad-spectrum antibiotic, medication for nausea and stomach problems and antihistamine cream for insect bites and scratches

Please provide details of any allergies and specific dietary requirements or preferences, e.g., vegetarian.

